

# NIKKEN ROTARY TABLES

## FOR HWACHEON MACHINES



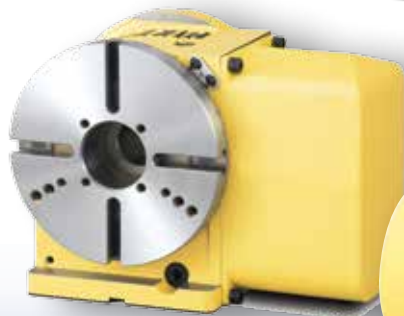
**HWACHEON**



***SIRIUS SERIES***



***VESTA SERIES***



**Our Mission: Advanced Technology and Leading Innovation**

At Lyndex-Nikken, we have made it our mission to provide the two things our customers need most: advanced technology and the innovation to keep it moving forward.

With a history rich in innovation and a focus on the technology of the future, Lyndex-Nikken has become the leader in manufacturing innovation. Our industry-leading design and capabilities give us the power to create ground-breaking tools and machine tool accessories that will perform with amazing precision and reliability.

All of our products are made in Japan, ensuring an extremely high level of quality and long-term resistance. We are continually striving to improve our technology through constant innovation to enhance the respect and reliability that our products have thus far earned within their respective industries.

Not only are we committed to providing the highest quality of equipment, but also the highest quality of service and customer care. Our team of highly experienced technicians and product specialists offers unmatched customer service and engineering support to our customers worldwide.

As an international company with offices conveniently located throughout Europe, Asia, and North America, Lyndex-Nikken is there to serve you, no matter where you are.





**HWACHEON VESTA 660** Pg. 6  
*CNC180FA, 202FA, 5AX-130FA*

**HWACHEON VESTA 850B** Pg. 8  
*CNC180FA, 202FA, 260FA, 302FA, 5AX-130FA, 5AX-201FA*



**HWACHEON VESTA 1000** Pg. 10  
*CNC180FA, 202FA, 260FA, 302FA, 5AX-130FA, 5AX-201FA*

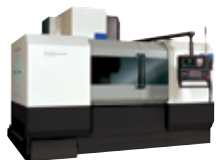
**HWACHEON VESTA 1050B** Pg. 12  
*CNC180FA, 202FA, 260FA, 302FA, 5AX-130FA, 5AX-201FA, 5AX-250FA*

**HWACHEON VESTA 1300B** Pg. 14  
*CNC180FA, 202FA, 260FA, 302FA, 321FA, 401FA, B350FA, B450FA, 5AX-201FA, 5AX-250FA, 5AX-350FA*



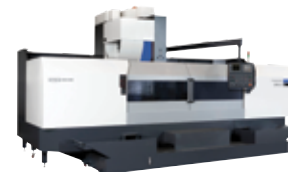
**HWACHEON VESTA 610D (2-APC)** Pg. 16  
*CNC180FA, 202FA*

**HWACHEON SIRIUS-UL** Pg. 18  
*CNC180FA, 202FA, 260FA, 5AX-130FA, 5AX-201FA*



**HWACHEON SIRIUS 7040/7050** Pg. 20  
*CNC180FA, 202FA, 260FA, 302FA, 321FA, 401FA, B350FA, B450FA, 5AX-130FA, 5AX-201FA, 5AX-250FA, 5AX-350FA*

**HWACHEON SIRIUS 650** Pg. 22  
*CNC202FA, 260FA, 302FA, 321FA, 401FA, B350FA, B450FA, 5AX-201FA, 5AX-250FA, 5AX-350FA*



**HWACHEON SIRIUS 1250** Pg. 24  
*CNC202FA, 260FA, 302FA, 321FA, 401FA, 501FA, B350FA, B450FA, B630A, 5AX-201FA, 5AX-250FA, 5AX-350FA*

**Rotary Table Dimensions** Pg. 26  
**Tailstock & Support Tables Accessories** Pg. 29  
**Rotary Table Installation** Pg. 30  
**Taper Plus Tool Holders** Pg. 32



1.



## Patented Solid Carbide Worm Screw and Heat Treated Steel Worm Wheel

- Hand matched and paired to maintain maximum thread engagement
- Four point bearing support system and eccentric housing structure
- Minimal wear compared to traditional bronze wheel configuration

2.

**LYNDEX-NIKKEN**

Nikken's unique design shrink fits the worm wheel onto the solid faceplate and quill body. This along with the hand pairing of the carbide worm screw eliminates backlash.



A much shorter distance from face plate to gear allows for greater torsional forces to be sustained.

The fine pitch of the worm wheel contributes to 4 arc second repeatability.



The material used for the Nikken worm wheel is custom made steel, specially hardened and ion nitrided on the teeth. As a consequence, frictions between the gears are eliminated.

**OTHER BRANDS**

Bolt-on bronze wheel to a two pieces faceplate and quill design. Configuration relies on the malleability of the worm wheel to deform around the shape of the worm screw to eliminate backlash.



Bolt-on faceplate to quill base

Soft worm wheels wear much quicker, resulting in indexing inaccuracies and unnecessary maintenance.

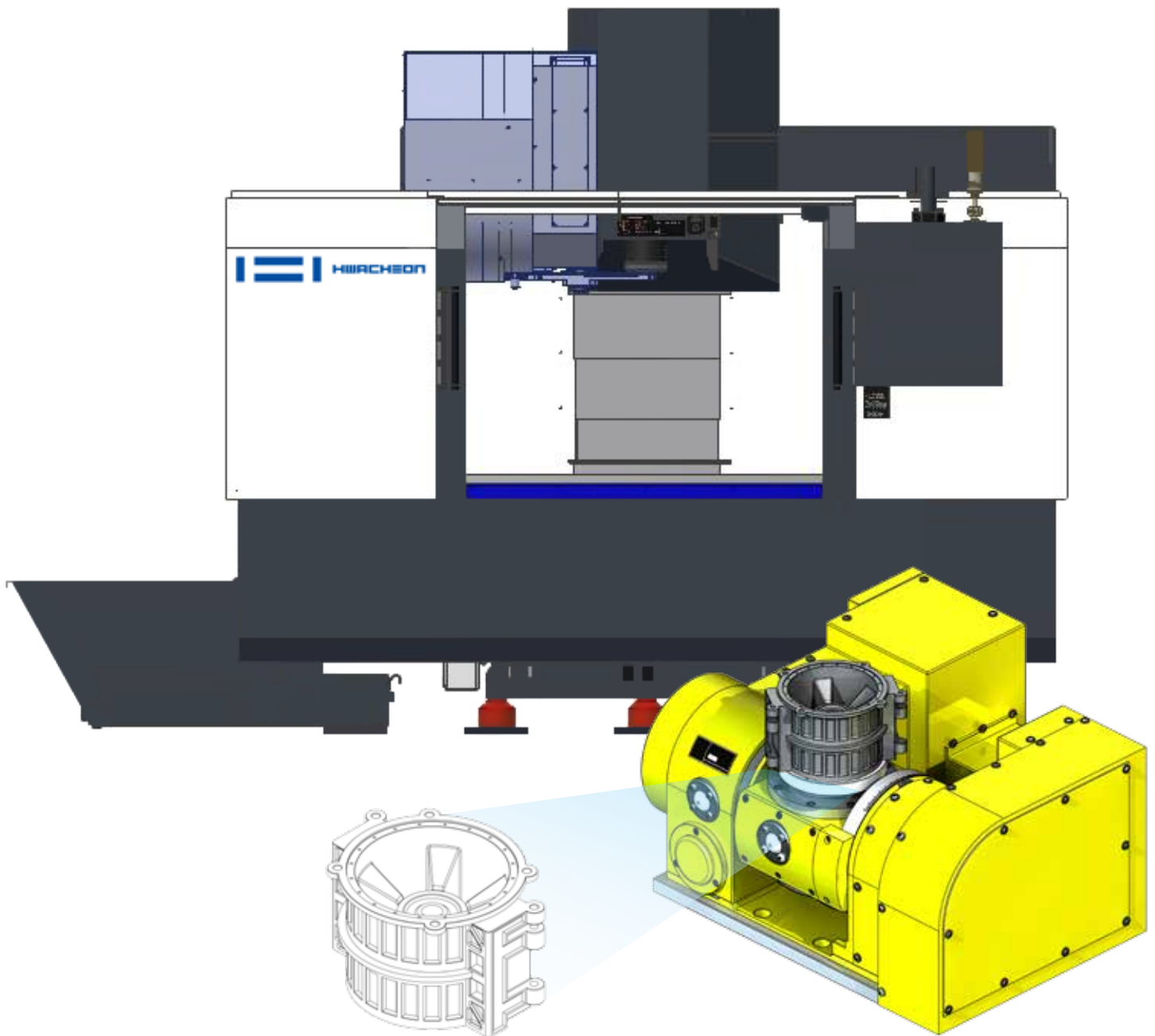
3.



## Independent Tubular Thrust and Radial Bearings

- Custom paired and matched for every rotary table
- Provide vibration dampening and internal gear protection
- Extreme rigidity and concentric accuracy from needle roller bearings

- 2-D and 3-D modeling support for clearance verification
- 3-D model support for programming integration
- Image rendering for proposals



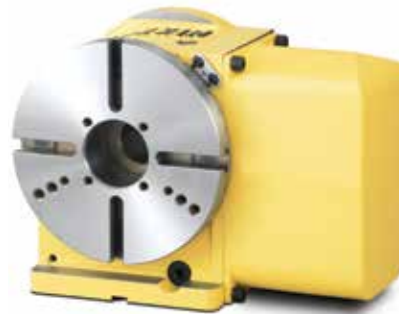


**GENERAL MACHINE SPECIFICATIONS**

<b>GENERAL MACHINE SPECIFICATIONS</b>	<b>STROKE (X/Y/Z)</b>	<b>in. (mm)</b>	25.98/16.93/15.75 (660/430/400)
	<b>FEED RATE - RAPID X/Y/Z</b>	<b>in/min (m/min)</b>	1,417.32/1,417.32/1,181.10 (36/36/30)
	<b>TABLE SIZE (WIDTH x LENGTH)</b>	<b>in. (mm)</b>	28.35 x 15.75 (720 x 400)
	<b>MAX. LOAD CAPACITY</b>	<b>lbs. (kg)</b>	1,234.59 (560)
	<b>MAX. SPINDLE SPEED</b>	<b>rpm</b>	10,000
	<b>SPINDLE MOTOR</b>	<b>kVA</b>	11 / 7.5
	<b>TYPE OF TOOL SHANK</b>	-	BT40 (Opt. CAT40)
	<b>TOOL STORAGE CAPACITY</b>	<b>ea.</b>	20
	<b>FLOOR SPACE (LENGTH x WIDTH)</b>	<b>in. (mm)</b>	123.23 x 77.95 (3130 x 1980)
	<b>NC SYSTEM</b>	-	Fanuc Oi-MD



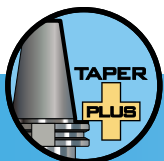
**CNC180FA** (7.09" faceplate)



**CNC202FA** (7.87" faceplate)



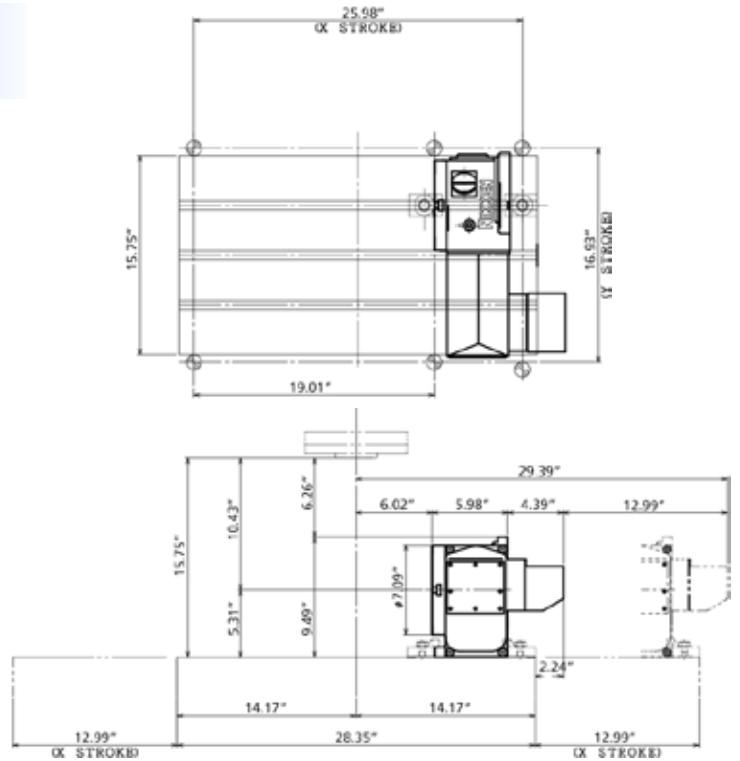
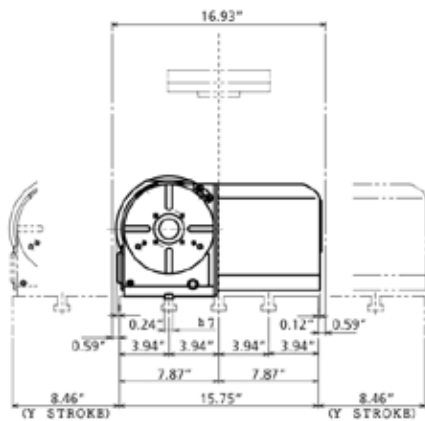
**5AX-130FA** (5.12" faceplate)



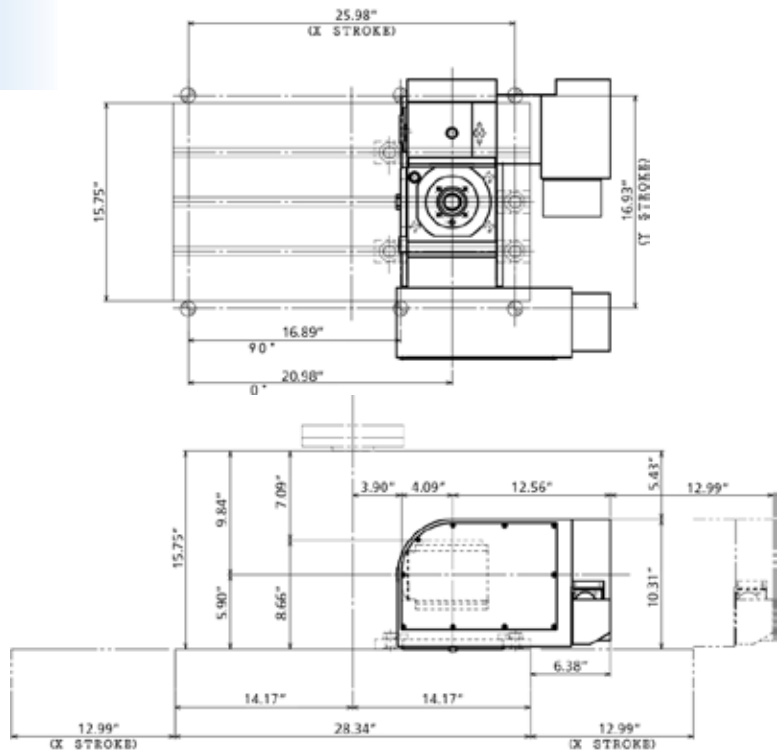
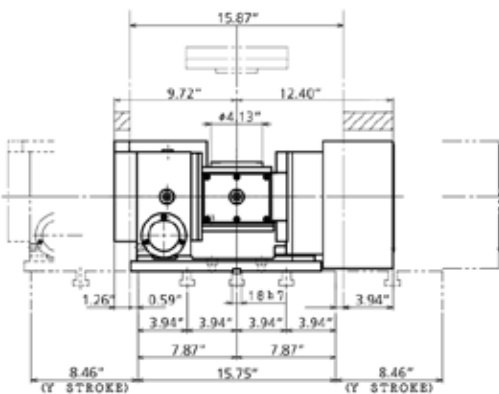
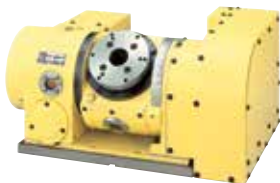
For dual contact tool holders on BBT spindles, please reference pages 32-33 and the Lyndex-Nikken Taper Plus Tool Holder catalog.



## CNC180FA / CNC202FA

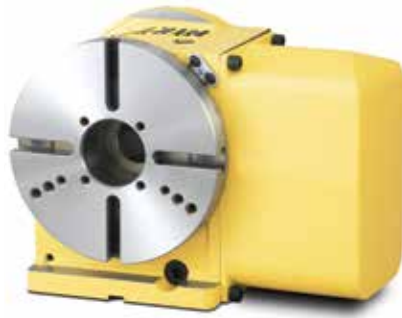


## 5AX-130FA



**GENERAL MACHINE SPECIFICATIONS**

<b>GENERAL MACHINE SPECIFICATIONS</b>	<b>STROKE (X/Y/Z)</b>	<b>in. (mm)</b>	33.46/23.62/23.62 (850/600/600)
	<b>FEED RATE - RAPID X/Y/Z</b>	<b>in./min (m/min)</b>	944.88/944.88/708.66 (24/24/18)
	<b>TABLE SIZE (WIDTH x LENGTH)</b>	<b>in. (mm)</b>	41.34 x 23.62 (1,050 x 600)
	<b>MAX. LOAD CAPACITY</b>	<b>lbs. (kg)</b>	1,763.70 (800)
	<b>MAX. SPINDLE SPEED</b>	<b>rpm</b>	8,000 (6,000)
	<b>SPINDLE MOTOR</b>	<b>kVA</b>	11/7.5 (18.5/15)
	<b>TYPE OF TOOL SHANK</b>	-	BT-40/50 (Opt. CAT-40/50)
	<b>TOOL STORAGE CAPACITY</b>	<b>ea.</b>	24 (Opt. 30)
	<b>FLOOR SPACE (LENGTH x WIDTH)</b>	<b>in. (mm)</b>	143.31 x 86.02 (3,640 x 2,185)
	<b>NC SYSTEM</b>	-	Fanuc Oi-MD



**CNC180FA/202FA** (7.09"/7.87" faceplate)



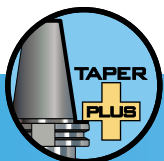
**CNC260FA/302FA** (10.24"/11.81" faceplate)



**5AX-130FA** (5.12" faceplate)



**5AX-201FA** (7.87" faceplate)

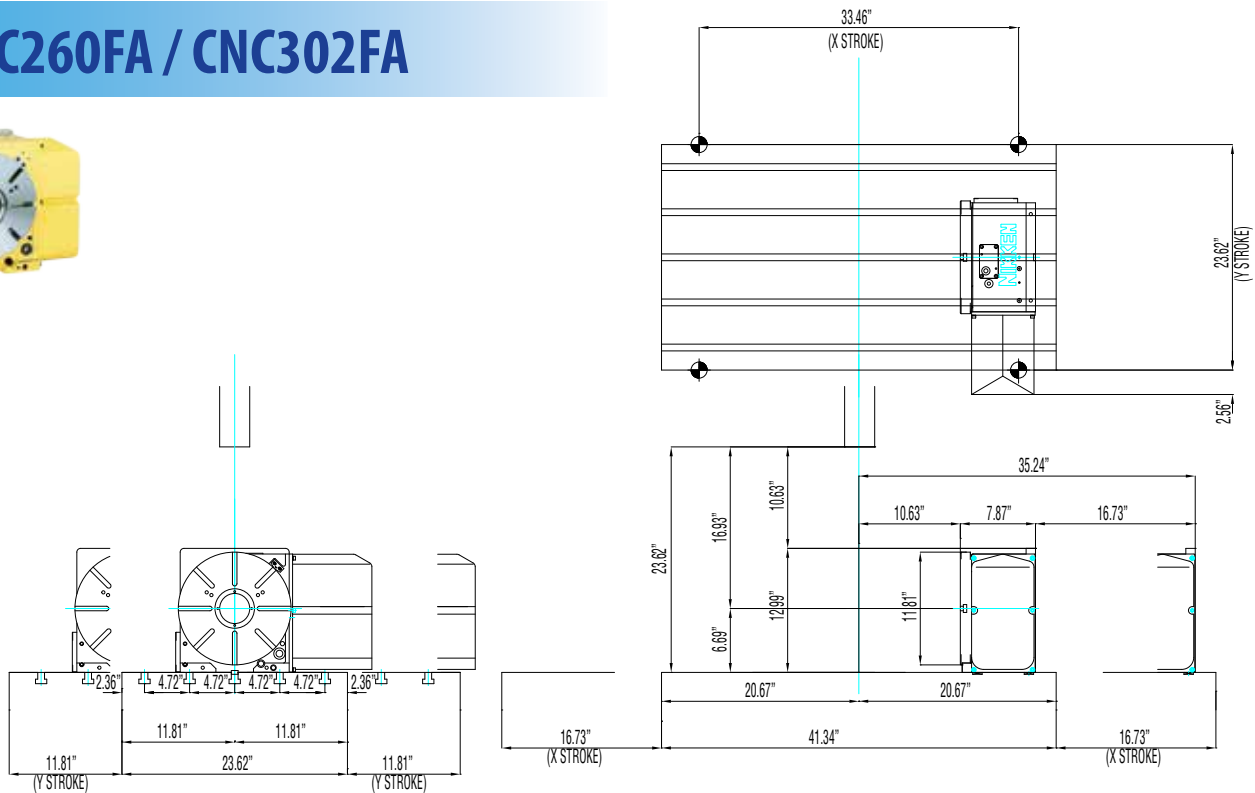


For dual contact tool holders on BBT spindles, please reference pages 32-33 and the Lyndex-Nikken Taper Plus Tool Holder catalog.

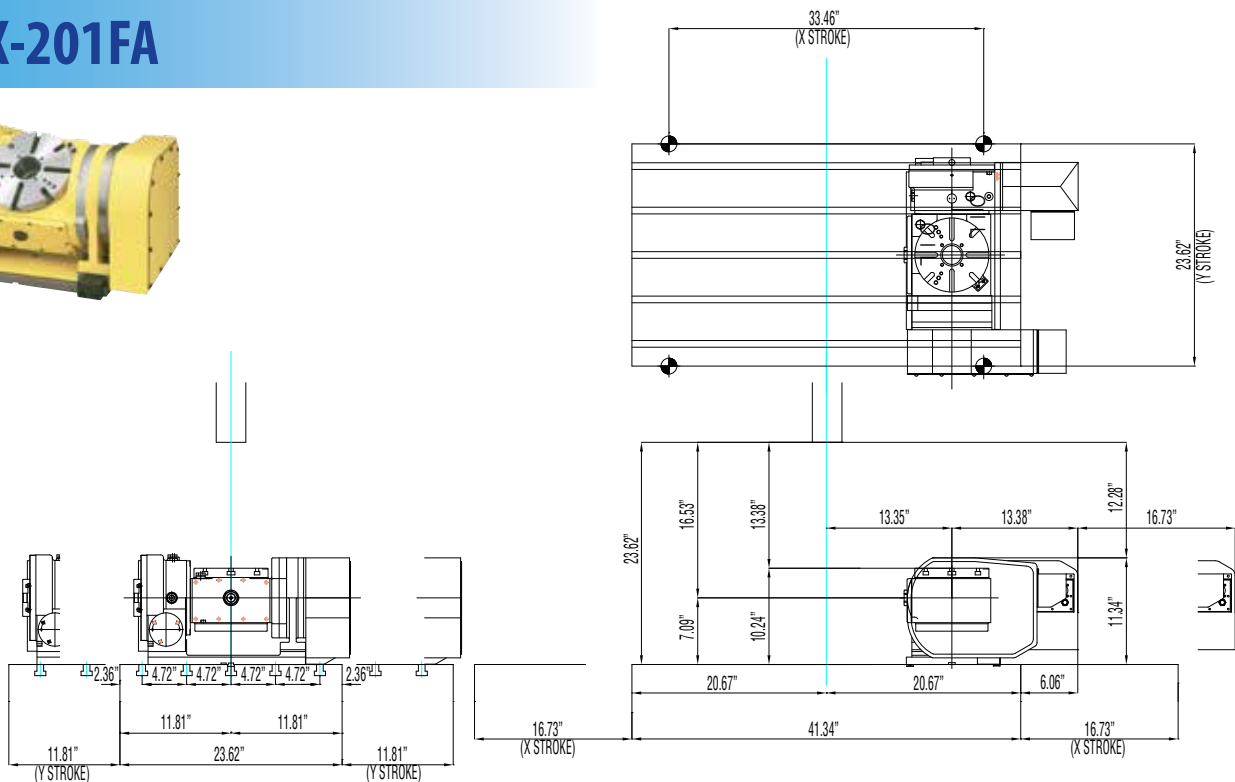




## CNC260FA / CNC302FA

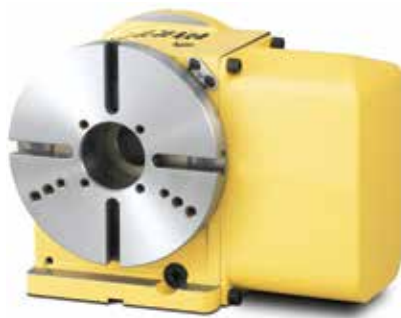


## 5AX-201FA



**GENERAL MACHINE SPECIFICATIONS**

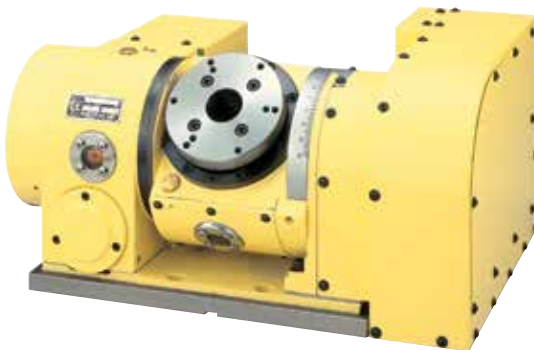
<b>GENERAL MACHINE SPECIFICATIONS</b>	<b>STROKE (X/Y/Z)</b>	<b>in. (mm)</b>	39.37/21.65/19.68 (1000/550/500)
	<b>FEED RATE - RAPID X/Y/Z</b>	<b>in./min (m/min)</b>	1,417.32/1,417.32/1,181.10 (36/36/30)
	<b>TABLE SIZE (WIDTH x LENGTH)</b>	<b>in. (mm)</b>	43.31 x 19.68 (1100 x 500)
	<b>MAX. LOAD CAPACITY</b>	<b>lbs. (kg)</b>	1,543.24 (700)
	<b>MAX. SPINDLE SPEED</b>	<b>rpm</b>	10000
	<b>SPINDLE MOTOR</b>	<b>kVA</b>	15 / 11
	<b>TYPE OF TOOL SHANK</b>	-	BT40 (Opt.CAT40)
	<b>TOOL STORAGE CAPACITY</b>	<b>ea.</b>	24 (Opt. 30)
	<b>FLOOR SPACE (LENGTH x WIDTH)</b>	<b>in. (mm)</b>	128.74 x 85.83 (3270 x 2180)
	<b>NC SYSTEM</b>	-	Fanuc Oi-MD



**CNC180FA/202FA** (7.09"/7.87" faceplate)



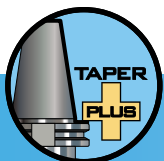
**CNC260FA/302FA** (10.24"/11.81" faceplate)



**5AX-130FA** (5.12" faceplate)



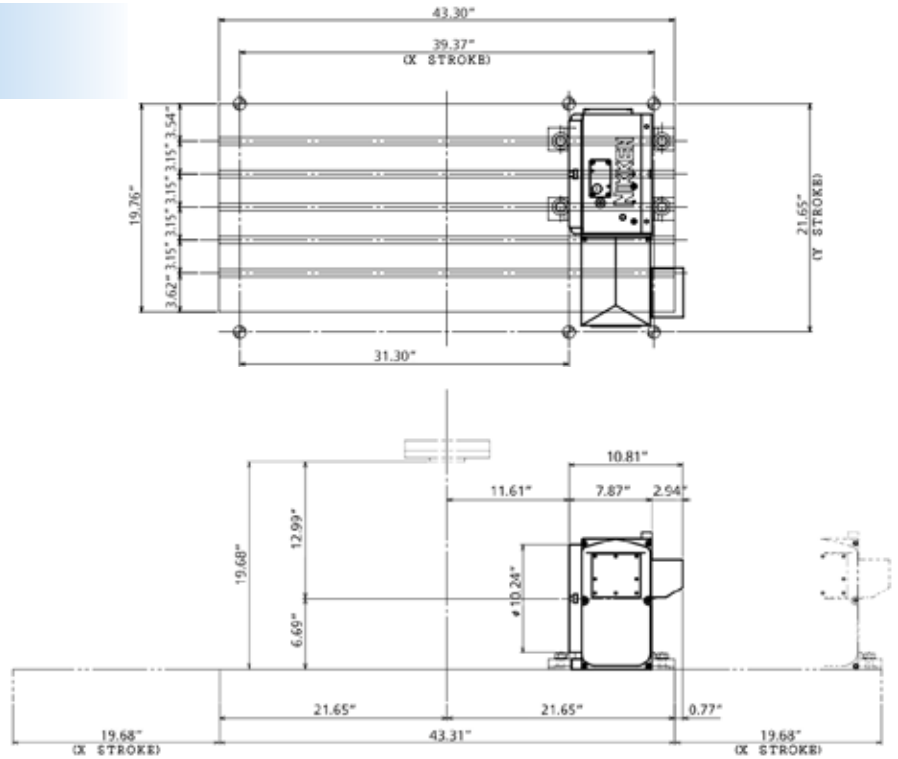
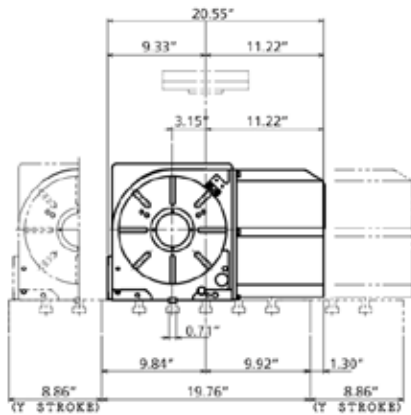
**5AX-201FA** (7.87" faceplate)



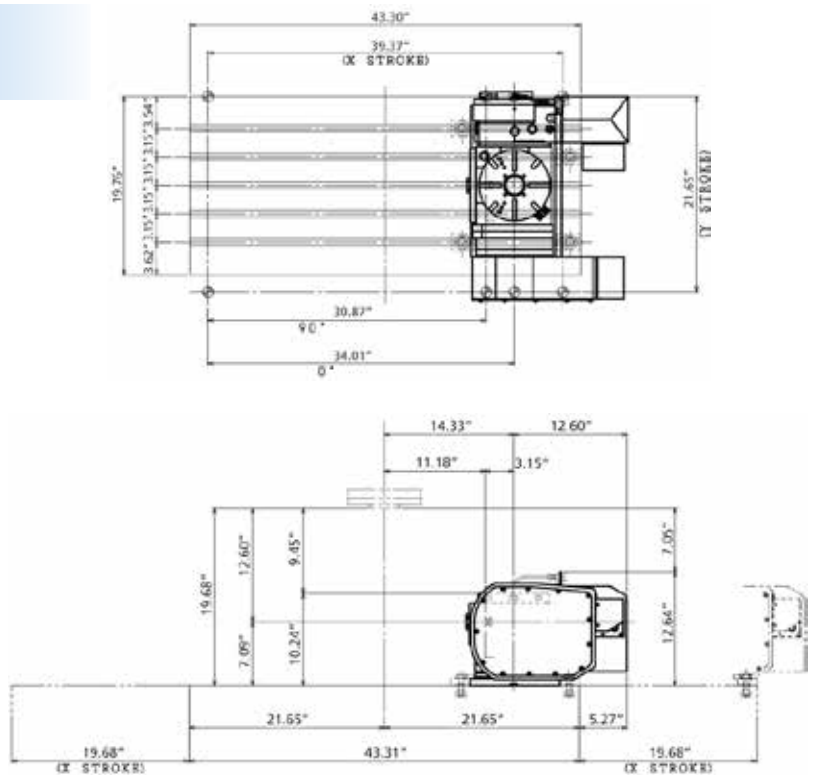
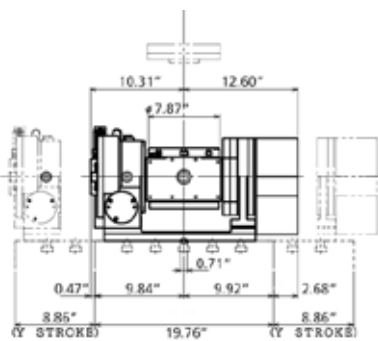
For dual contact tool holders on BBT spindles, please reference pages 32-33 and the Lyndex-Nikken Taper Plus Tool Holder catalog.



## CNC260FA / CNC302FA

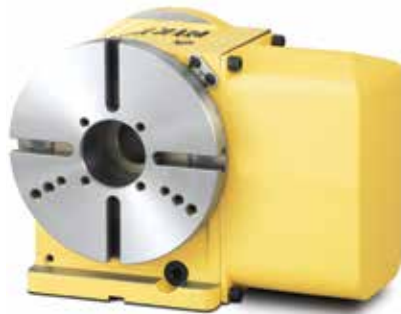


## 5AX-201FA



## GENERAL MACHINE SPECIFICATIONS

GENERAL MACHINE SPECIFICATIONS	STROKE (X/Y/Z)	in. (mm)	41.34/23.62/23.62 (1050/600/600)
	FEED RATE - RAPID X/Y/Z	in./min (m/min)	944.88/944.88/708.66 (24/24/18)
	TABLE SIZE (WIDTH x LENGTH)	in. (mm)	45.27 x 23.62 (1,150 x 600)
	MAX. LOAD CAPACITY	lbs. (kg)	2,204.62 (1000)
	MAX. SPINDLE SPEED	rpm	8,000 (6,000)
	SPINDLE MOTOR	kVA	18.5/15
	TYPE OF TOOL SHANK	-	BT-40/50 (Opt. CAT-40/50)
	TOOL STORAGE CAPACITY	ea.	24 (Opt. 30)
	FLOOR SPACE (LENGTH x WIDTH)	in. (mm)	157.09 x 86.02 (3,990 x 2,185)
	NC SYSTEM	-	Fanuc Oi-MD



**CNC180FA/202FA** (7.09"/7.87" faceplate)



**CNC260FA/302FA** (10.24"/11.81" faceplate)



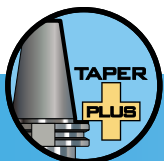
**5AX-130FA** (5.12" faceplate)



**5AX-201FA** (7.87" faceplate)



**5AX-250FA** (9.84" faceplate)

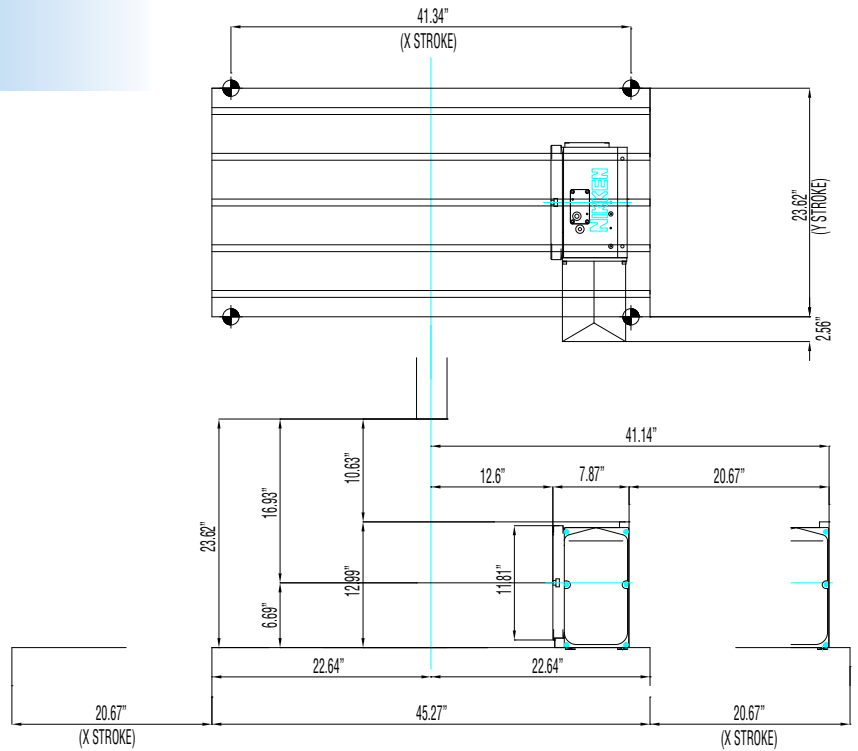
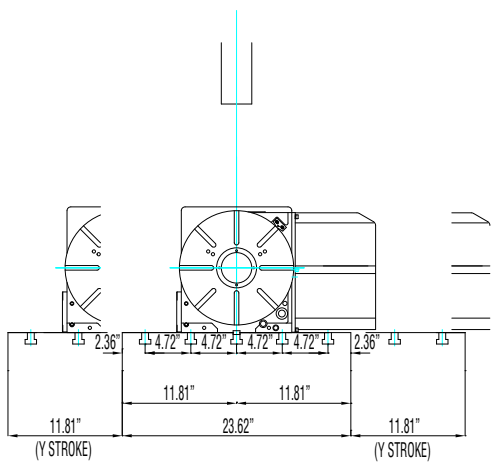


For dual contact tool holders on BBT spindles, please reference pages 32-33 and the Lyndex-Nikken Taper Plus Tool Holder catalog.

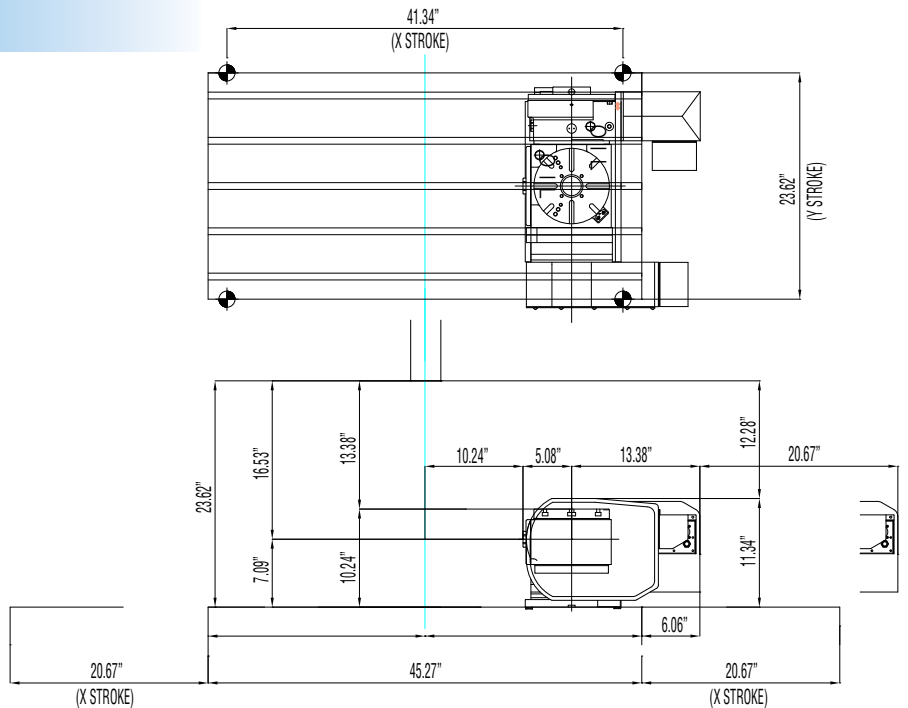
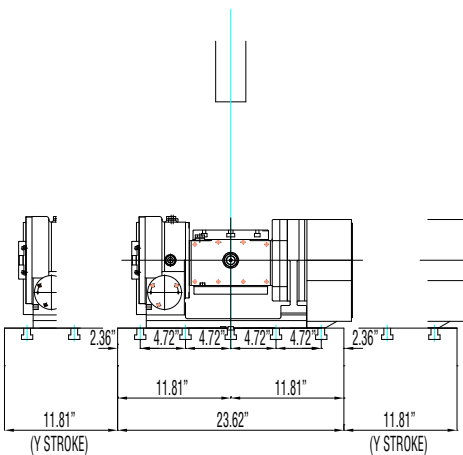




## CNC260FA / CNC302FA



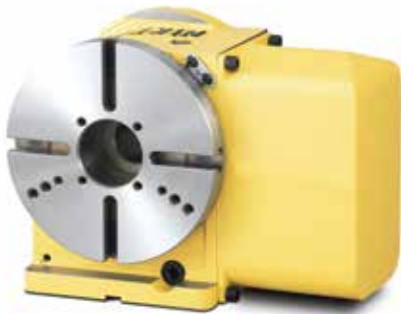
## 5AX-201FA



**GENERAL MACHINE SPECIFICATIONS**

GENERAL MACHINE SPECIFICATIONS

<b>STROKE (X/Y/Z)</b>	<b>in. (mm)</b>	51.18/26.38/25.59 (1300/670/650)
<b>FEED RATE - RAPID X/Y/Z</b>	<b>in/min (m/min)</b>	1,181.10/1,181.10/944.88 (30/30/24)
<b>TABLE SIZE (WIDTH x LENGTH)</b>	<b>in. (mm)</b>	57.09 x 26.38 (1450 x 670)
<b>MAX. LOAD CAPACITY</b>	<b>lbs. (kg)</b>	2,646 (1200)
<b>MAX. SPINDLE SPEED</b>	<b>rpm</b>	12,000
<b>SPINDLE MOTOR</b>	<b>kVA</b>	50
<b>TYPE OF TOOL SHANK</b>	-	BT-40 (Opt. CAT-40)
<b>TOOL STORAGE CAPACITY</b>	<b>ea.</b>	30 (Opt. 40)
<b>FLOOR SPACE (LENGTH x WIDTH)</b>	<b>in. (mm)</b>	166.1 x 94.9 (4220 x 2410)
<b>NC SYSTEM</b>	-	Fanuc Oi-MD



**CNC180FA/202FA** (7.09"/7.87" faceplate)



**CNC260FA/302FA** (10.24"/11.81" faceplate)



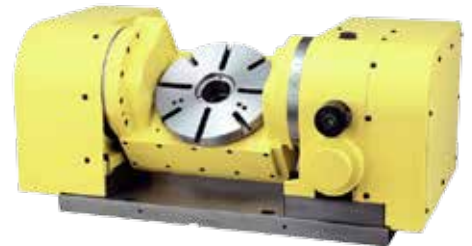
**CNC321FA/401FA** (12.60"/15.75" faceplate)



**CNCB350FA/B450FA** (13.78"/17.72" faceplate)



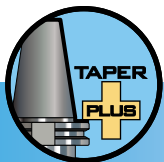
**5AX-201FA** (7.87" faceplate)



**5AX-250FA** (9.84" faceplate)



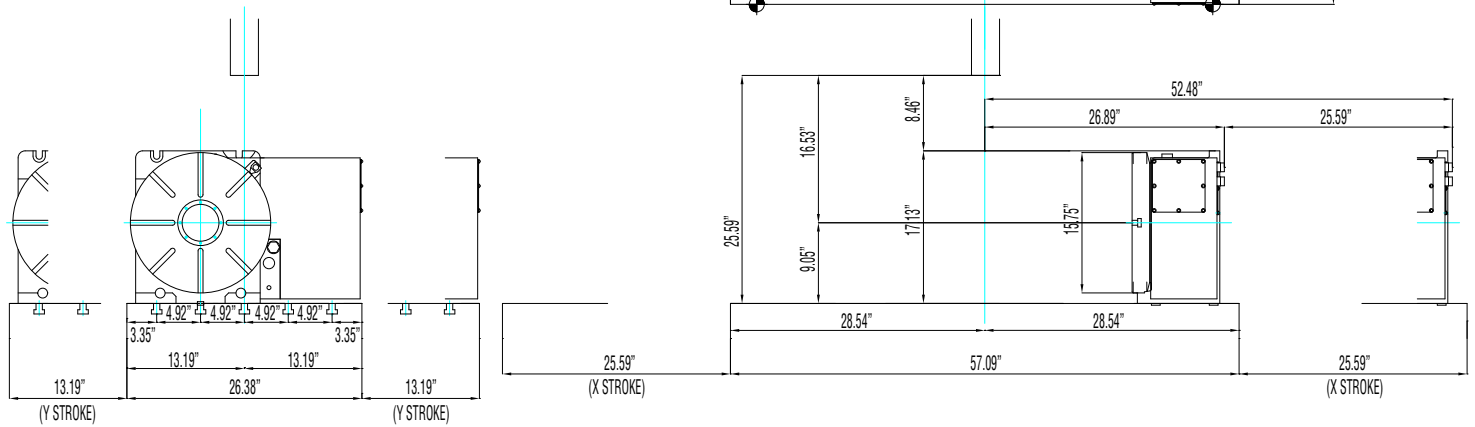
**5AX-350FA** (13.78" faceplate)



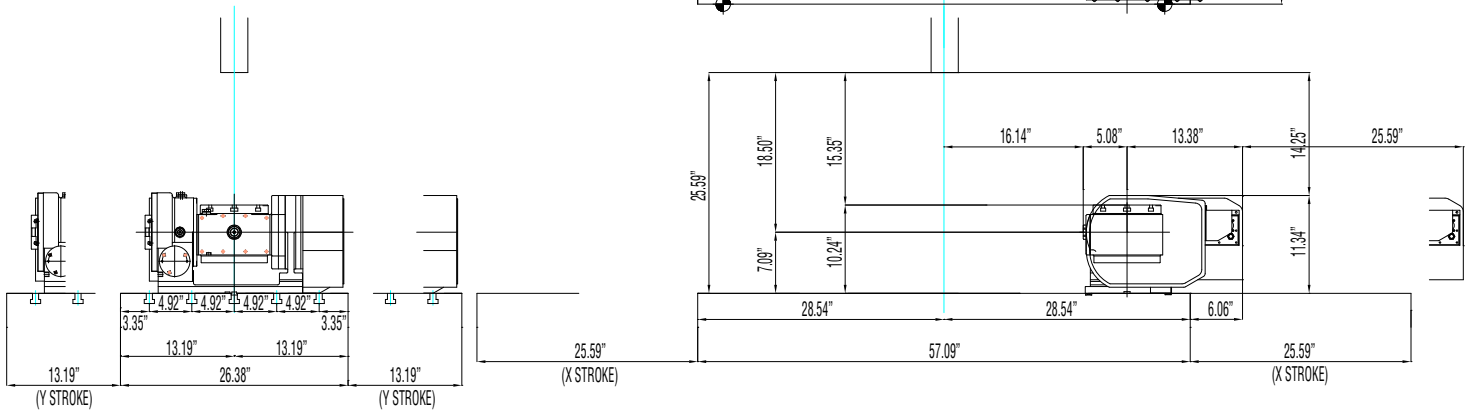
For dual contact tool holders on BBT spindles, please reference pages 32-33 and the Lyndex-Nikken Taper Plus Tool Holder catalog.



## CNC321FA / CNC401FA



## 5AX-201FA

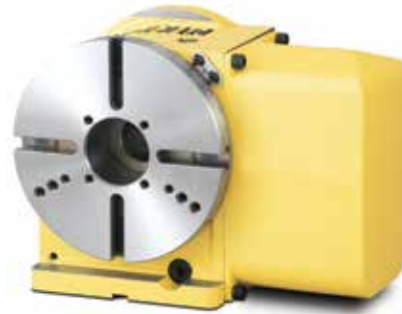


## GENERAL MACHINE SPECIFICATIONS

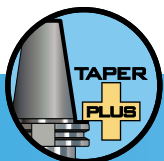
GENERAL MACHINE SPECIFICATIONS	<b>STROKE (X/Y/Z)</b>	in. (mm)	24.01/16.93/22.44 (610/430/570)
	<b>FEED RATE - RAPID X/Y/Z</b>	in/min (m/min)	1,574.80/1,574.80/1,574.80 (40/40/40)
	<b>TABLE SIZE (WIDTH x LENGTH)</b>	in. (mm)	2 ea. - 25.59 x 17.72 (650 x 450)
	<b>MAX. LOAD CAPACITY</b>	lbs. (kg)	2 ea. - 661.39 (300)
	<b>MAX. SPINDLE SPEED</b>	rpm	10,000
	<b>SPINDLE MOTOR</b>	kVA	15 / 11
	<b>TYPE OF TOOL SHANK</b>	-	BT40 (Opt. CAT40)
	<b>TOOL STORAGE CAPACITY</b>	ea.	24
	<b>FLOOR SPACE (LENGTH x WIDTH)</b>	in. (mm)	162.60 x 84.05 (4,130 x 2,135)
	<b>NC SYSTEM</b>	-	Fanuc Oi-MD



**CNC180FA** (7.09" faceplate)



**CNC202FA** (7.87" faceplate)

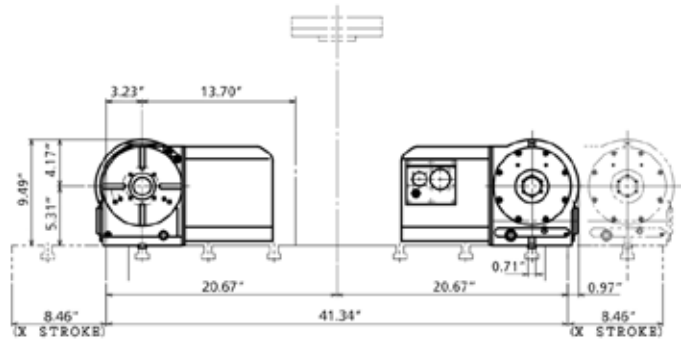
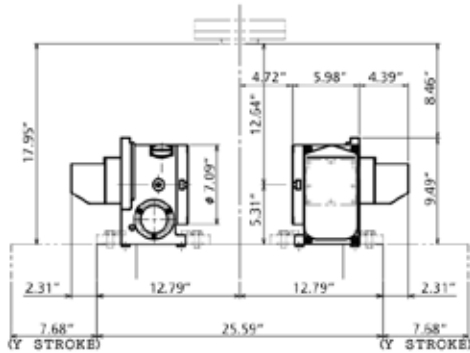
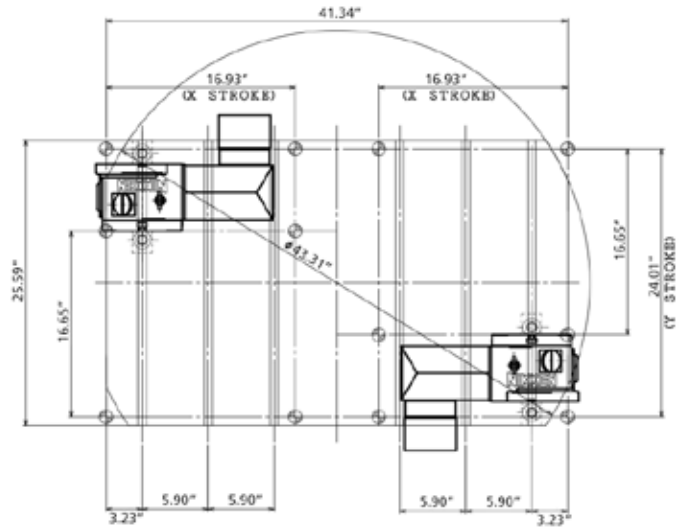
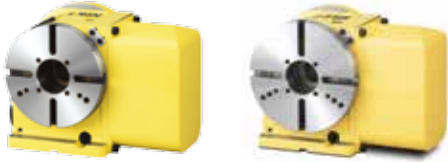


For dual contact tool holders on BBT spindles, please reference pages 32-33 and the Lyndex-Nikken Taper Plus Tool Holder catalog.



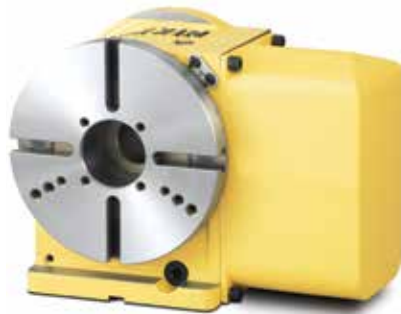


## CNC180FA / CNC202FA



**GENERAL MACHINE SPECIFICATIONS**

<b>GENERAL MACHINE SPECIFICATIONS</b>	<b>STROKE (X/Y/Z)</b>	in. (mm)	41.34/23.62/19.68 (1,050/600/500)
	<b>FEED RATE - RAPID X/Y/Z</b>	in./min (m/min)	1,574.80/1,574.80/1,574.80 (40/40/40)
	<b>TABLE SIZE (WIDTH x LENGTH)</b>	in. (mm)	47.24 x 23.62 (1,200 x 600)
	<b>MAX. LOAD CAPACITY</b>	lbs. (kg)	1,763.70 (800)
	<b>MAX. SPINDLE SPEED</b>	rpm	20,000
	<b>SPINDLE MOTOR</b>	kVA	22 / 18.5
	<b>TYPE OF TOOL SHANK</b>	-	BT-40 (Option: BBT-40, CAT-40)
	<b>TOOL STORAGE CAPACITY</b>	ea.	30
	<b>FLOOR SPACE (LENGTH x WIDTH)</b>	in. (mm)	107.09 x 122.05 (2,720 x 3,100)
	<b>NC SYSTEM</b>	-	Fanuc 31i-A



**CNC180FA/202FA** (7.09"/7.87" faceplate)



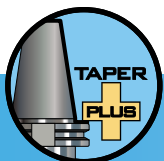
**CNC260FA/302FA** (10.24"/11.81" faceplate)



**5AX-130FA** (5.12" faceplate)



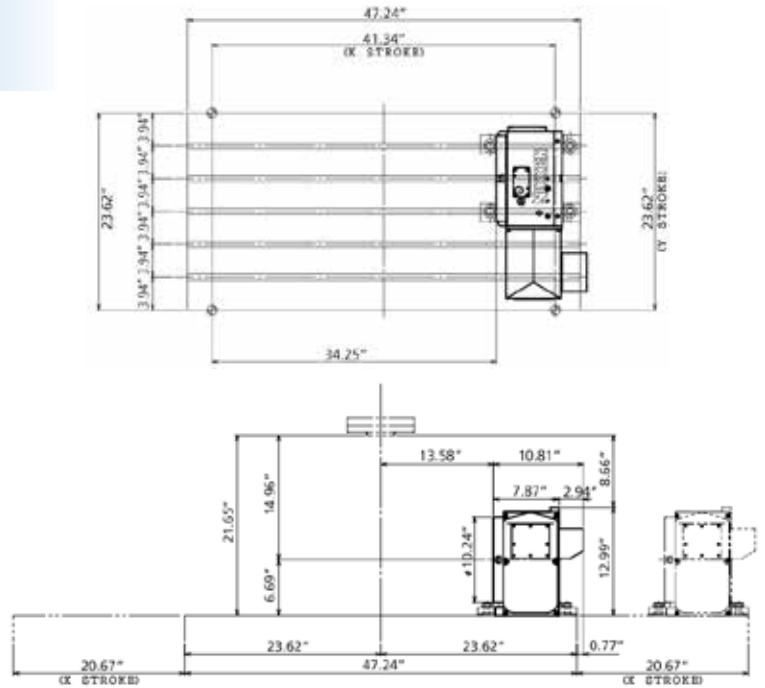
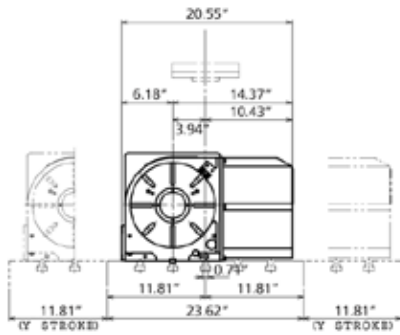
**5AX-201FA** (7.87" faceplate)



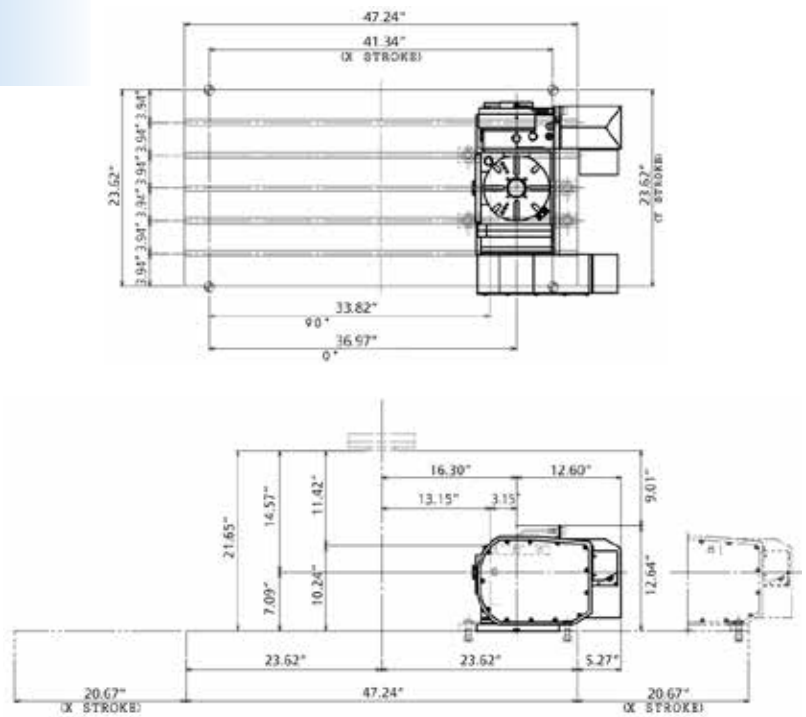
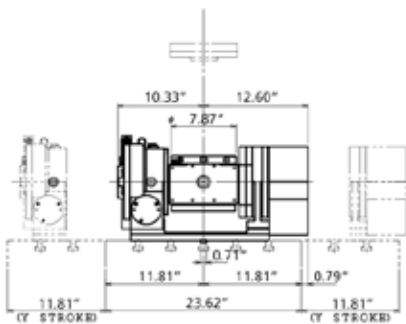
For dual contact tool holders on BBT spindles, please reference pages 32-33 and the Lyndex-Nikken Taper Plus Tool Holder catalog.



## CNC260FA / CNC302FA

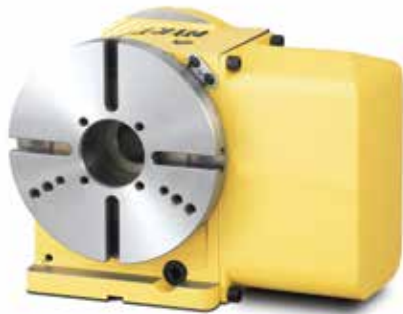


## 5AX-201FA



## GENERAL MACHINE SPECIFICATIONS

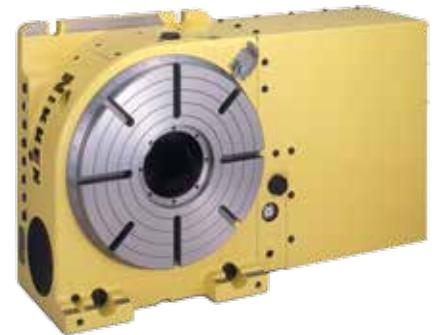
GENERAL MACHINE SPECIFICATIONS	STROKE (X/Y/Z)	in. (mm)	59.05/27.56/25.59 (1500/700/650)
	FEED RATE - RAPID X/Y/Z	in./min (m/min)	1,181.10/1,181.10/1,181.10 (30/30/30)
	TABLE SIZE (WIDTH x LENGTH)	in. (mm)	62.99 x 27.56 (1600 x 700)
	MAX. LOAD CAPACITY	lbf (kgf)	3,306.93 (1500)
	MAX. SPINDLE SPEED	rpm	10,000
	SPINDLE MOTOR	kVA	15 / 11
	TYPE OF TOOL SHANK	-	BT-40 (Opt. CAT-40)
	TOOL STORAGE CAPACITY	ea.	30
	FLOOR SPACE (LENGTH x WIDTH)	in. (mm)	148.82 x 120.08 (3,780 x 3,050)
	NC SYSTEM	-	Fanuc Oi-MD



**CNC180FA/202FA** (7.09"/7.87" faceplate)



**CNC260FA/302FA** (10.24"/11.81" faceplate)



**CNC321FA/401FA** (12.60"/15.75" faceplate)



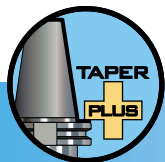
**CNCB350FA/B450FA** (13.78"/17.72" faceplate)



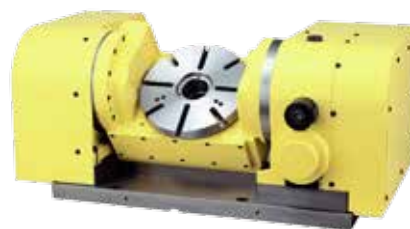
**5AX-130FA** (5.12" faceplate)



**5AX-201FA** (7.87" faceplate)



For dual contact tool holders on BBT spindles, please reference pages 32-33 and the Lyndex-Nikken Taper Plus Tool Holder catalog.



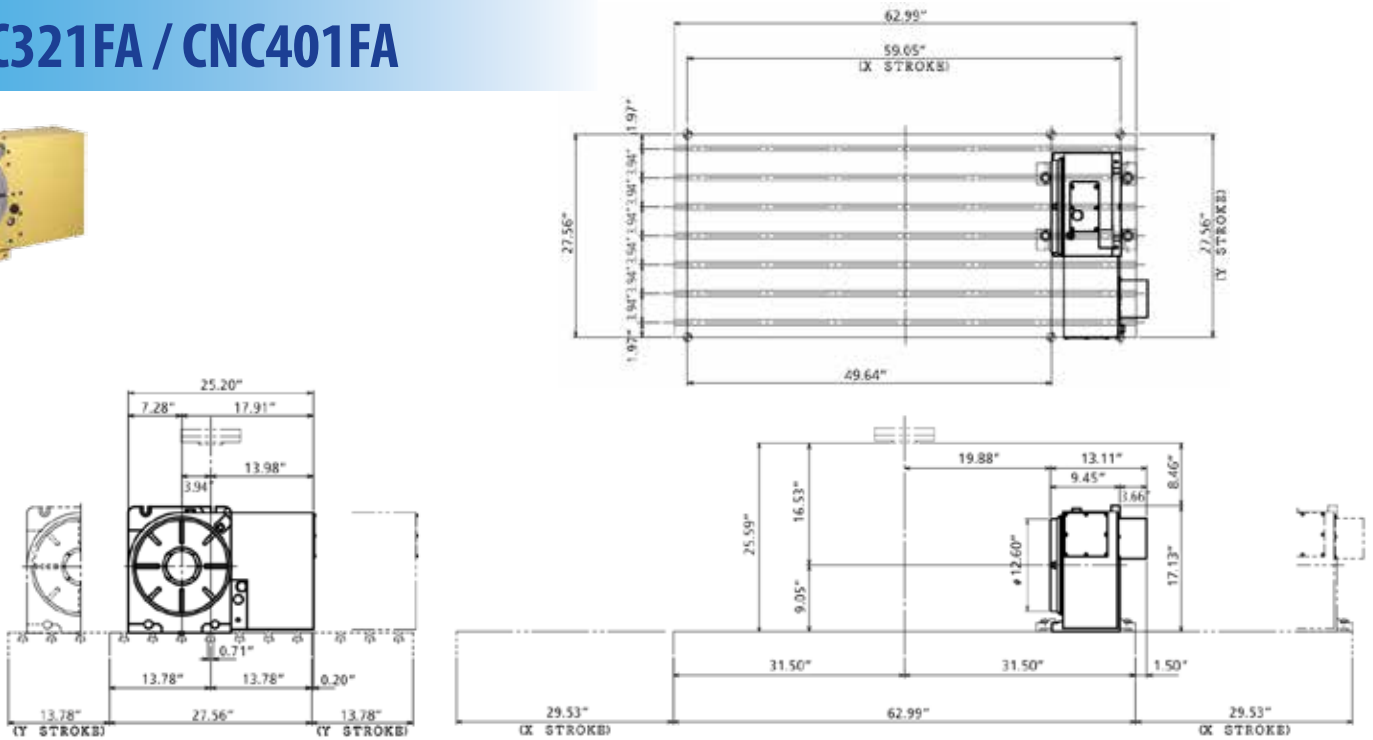
**5AX-250FA** (9.84" faceplate)



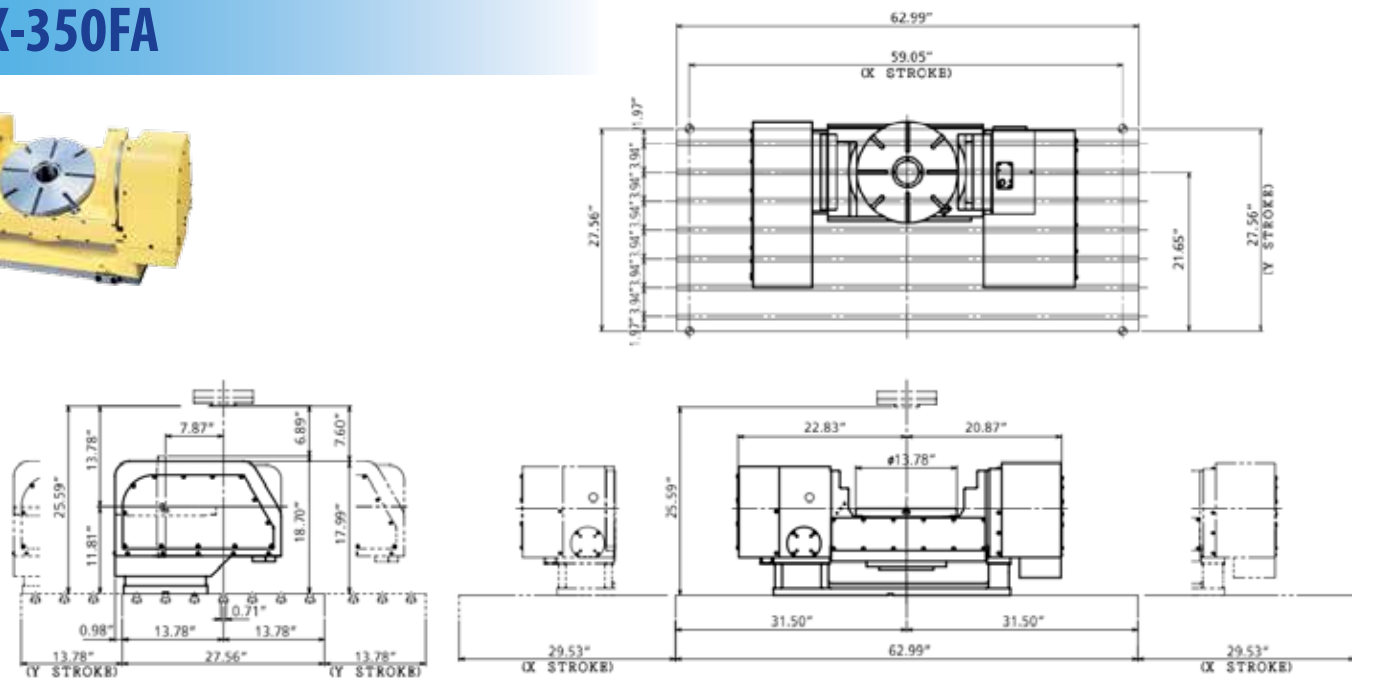
**5AX-350FA** (13.78" faceplate)



## CNC321FA / CNC401FA



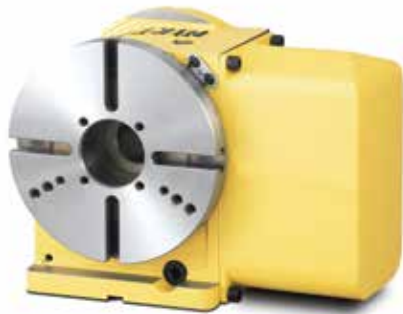
## 5AX-350FA



**GENERAL MACHINE SPECIFICATIONS**

GENERAL MACHINE SPECIFICATIONS

STROKE (X/Y/Z)	in. (mm)	51.18/25.59/25.59 (1300/650/650)
FEED RATE - RAPID X/Y/Z	in./min (m/min)	590.55/590.55/472.44 (15/15/12)
TABLE SIZE (WIDTH x LENGTH)	in. (mm)	70.87 x 25.59 (1800 x 650)
MAX. LOAD CAPACITY	lbf (kgf)	3,306.93 (1500)
MAX. SPINDLE SPEED	rpm	5000/8000
SPINDLE MOTOR	kVA	18.5/15
TYPE OF TOOL SHANK	-	BT-50 (Opt. CAT-50)
TOOL STORAGE CAPACITY	ea.	24
FLOOR SPACE (LENGTH x WIDTH)	in. (mm)	168.50 x 157.87 (4,280 x 4,010)
NC SYSTEM	-	Fanuc 31i-A



**CNC202FA** (7.87" faceplate)



**CNC260FA/302FA** (10.24"/11.81" faceplate)



**CNC321FA/401FA** (12.60"/15.75" faceplate)



**CNCB350FA/B450FA** (13.78"/17.72" faceplate)



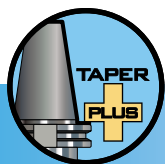
**5AX-201FA** (7.87" faceplate)



**5AX-250FA** (9.84" faceplate)



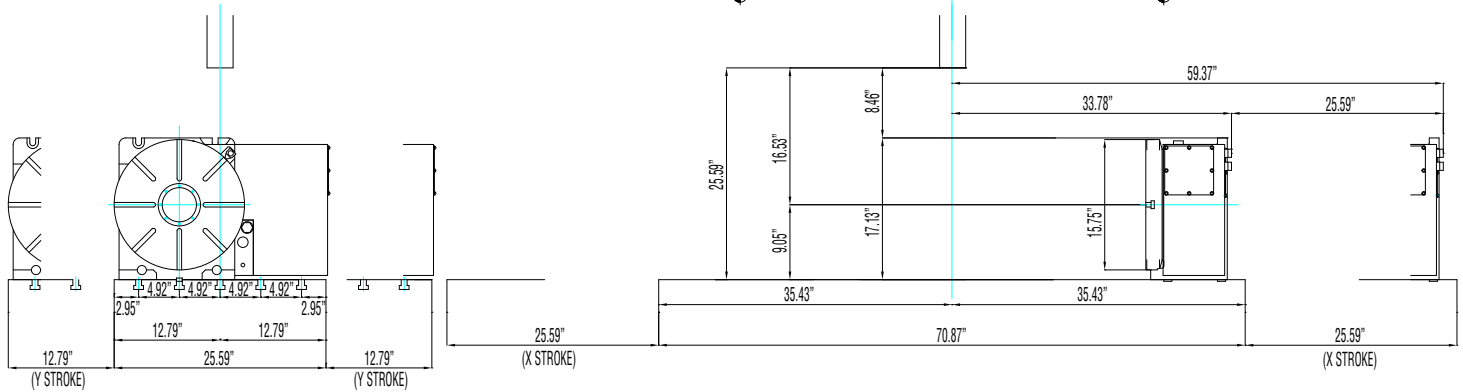
**5AX-350FA** (13.78" faceplate)



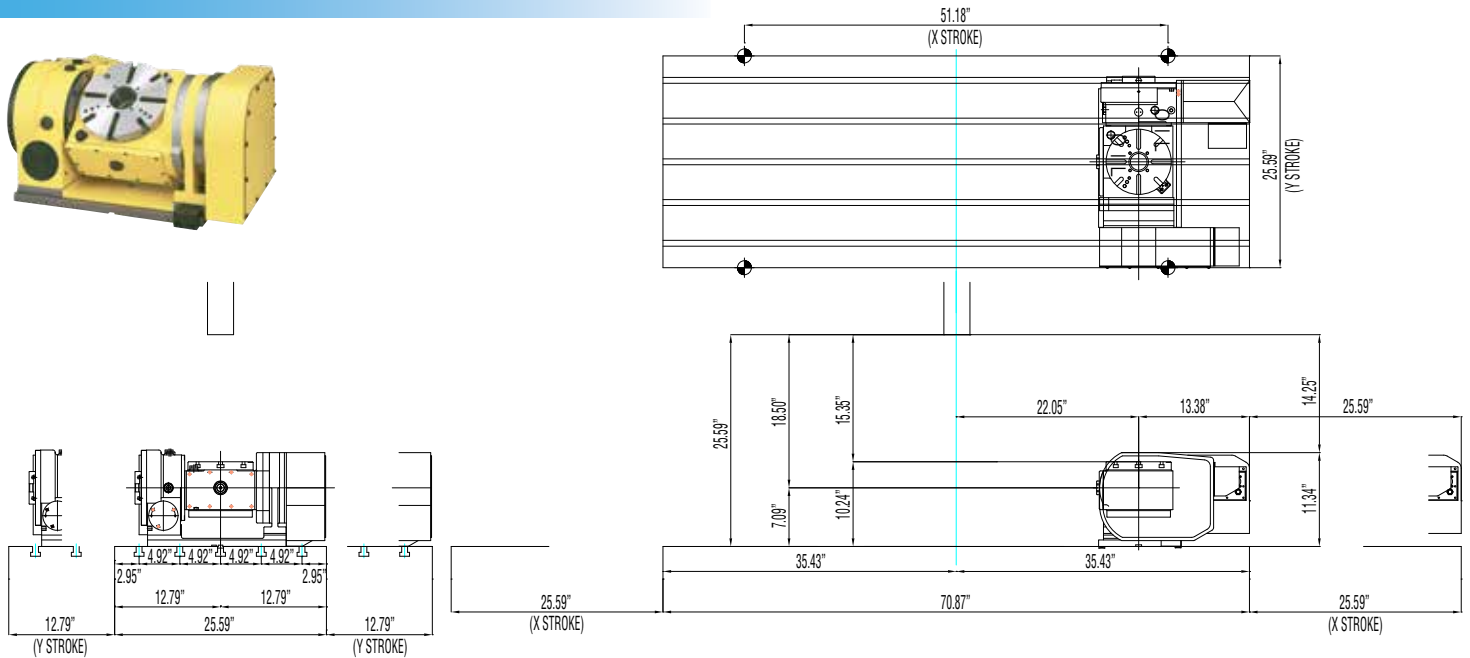
For dual contact tool holders on BBT spindles, please reference pages 32-33 and the Lyndex-Nikken Taper Plus Tool Holder catalog.



## CNC321FA / CNC401FA

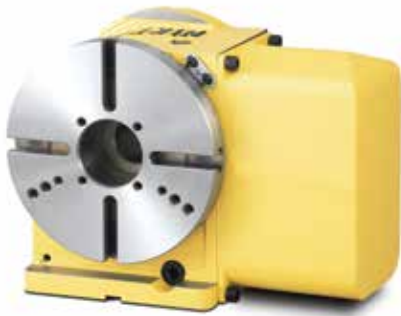


## 5AX-201FA



**GENERAL MACHINE SPECIFICATIONS**

<b>GENERAL MACHINE SPECIFICATIONS</b>	<b>STROKE (X/Y/Z)</b>	in. (mm)	98.42/49.21/29.53 (2500/1250/750)
	<b>FEED RATE - RAPID X/Y/Z</b>	in/min (m/min)	629.92/629.92/629.92 (16/16/16)
	<b>TABLE SIZE (WIDTH x LENGTH)</b>	in. (mm)	110.24 x 49.21 (2800 x 1250)
	<b>MAX. LOAD CAPACITY</b>	lbf (kgf)	11,023.11 (5000)
	<b>MAX. SPINDLE SPEED</b>	rpm	8,000/12,000
	<b>SPINDLE MOTOR</b>	kVA	30/25
	<b>TYPE OF TOOL SHANK</b>	-	BT-50 (Opt. BBT-50, CAT-50)
	<b>TOOL STORAGE CAPACITY</b>	ea.	8 (Opt. 40)
	<b>FLOOR SPACE (LENGTH x WIDTH)</b>	in. (mm)	287.60 x 156.50 (7305 x 3975)
	<b>NC SYSTEM</b>	-	Fanuc 31i-A



**CNC202FA** (7.87" faceplate)



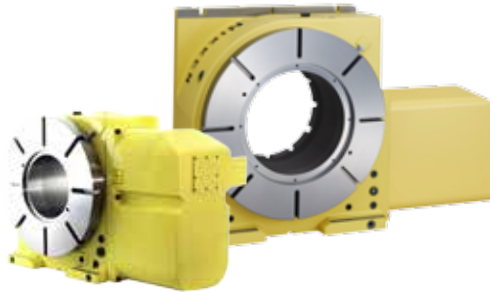
**CNC260FA/302FA** (10.24"/11.81" faceplate)



**CNC321FA/401FA** (12.60"/15.75" faceplate)



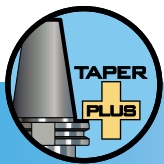
**CNC501FA** (19.69" faceplate)



**CNCB350FA/B450FA/B630FA** (13.78"/17.72"/24.8" faceplate)



**5AX-201FA** (7.87" faceplate)



For dual contact tool holders on BBT spindles, please reference pages 32-33 and the Lyndex-Nikken Taper Plus Tool Holder catalog.



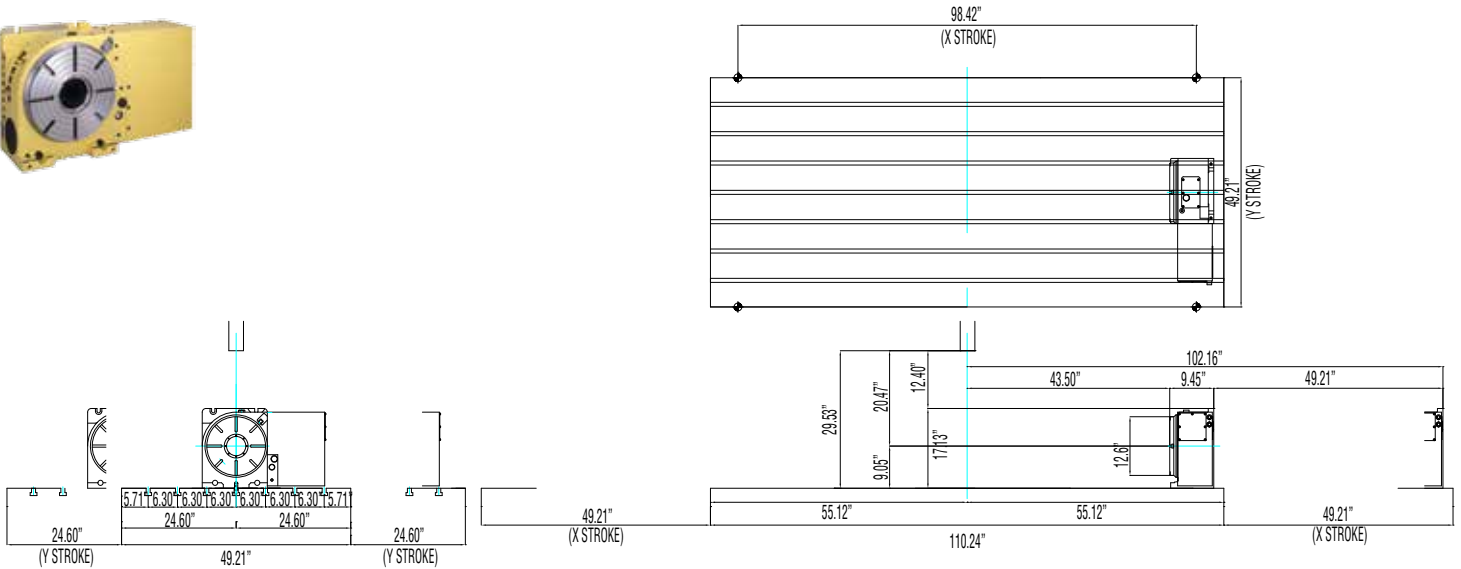
**5AX-250FA** (9.84" faceplate)



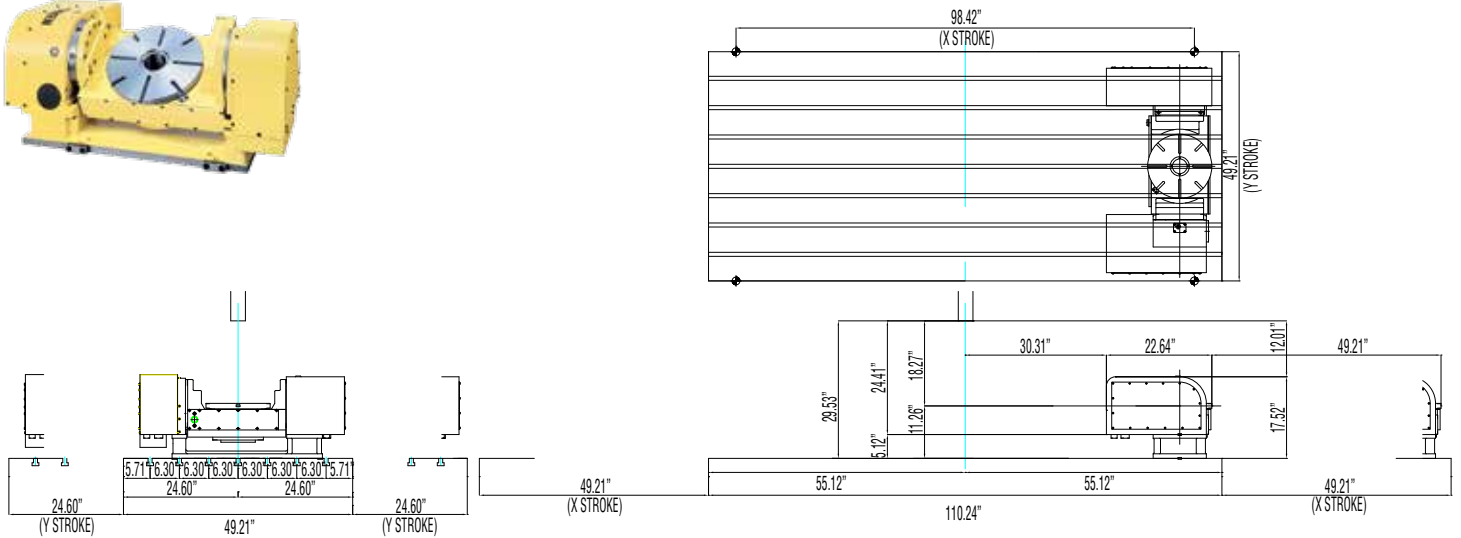
**5AX-350FA** (13.78" faceplate)



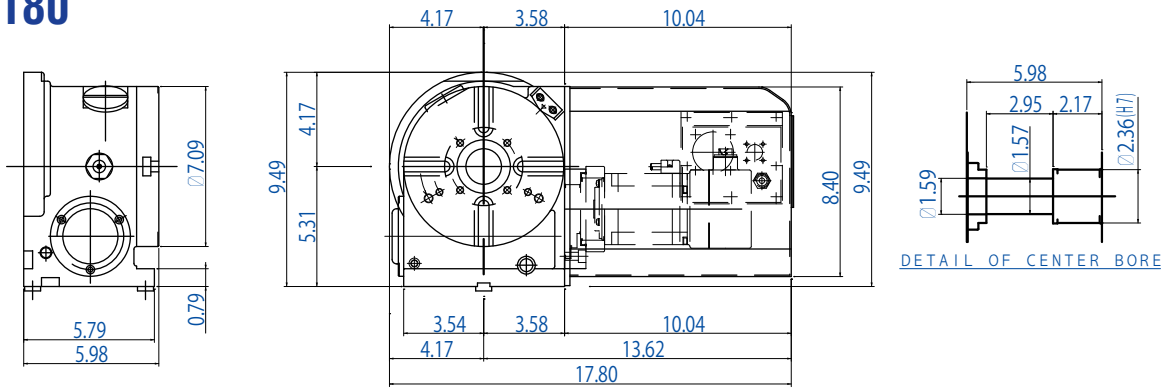
## CNC321FA



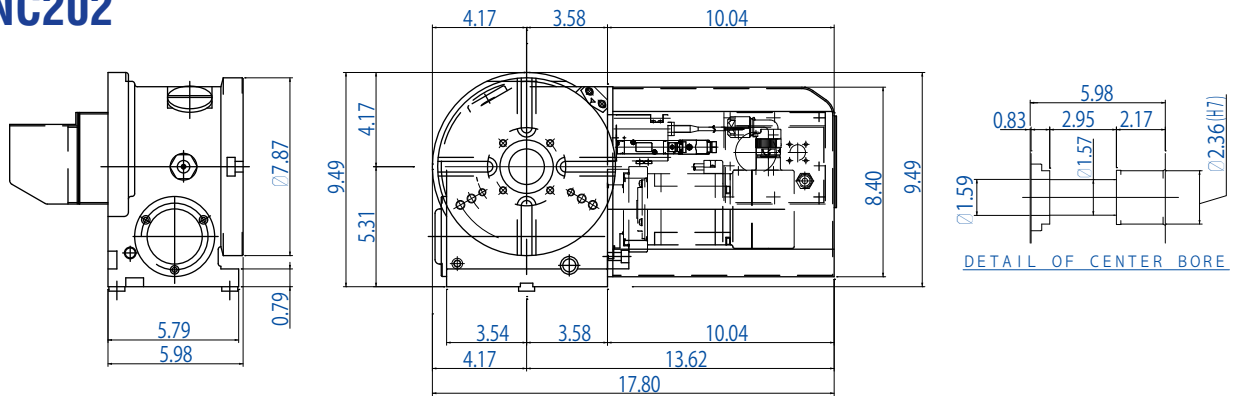
## 5AX-350FA



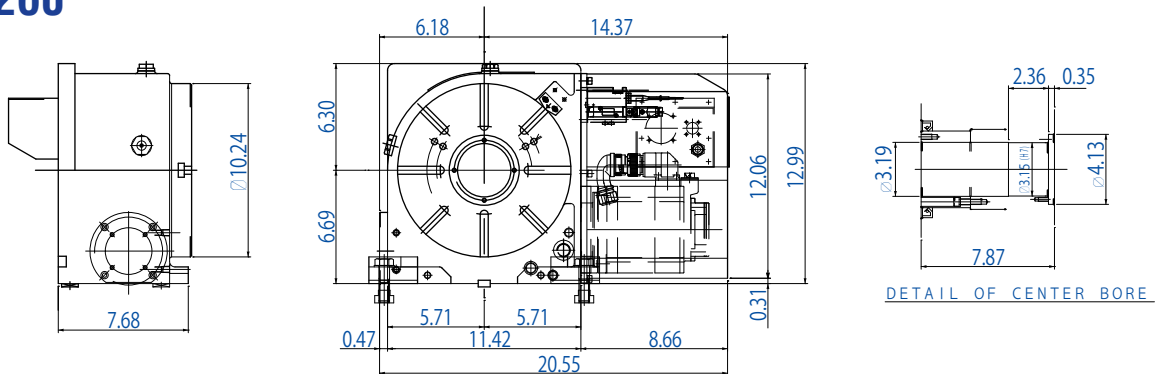
## CNC180



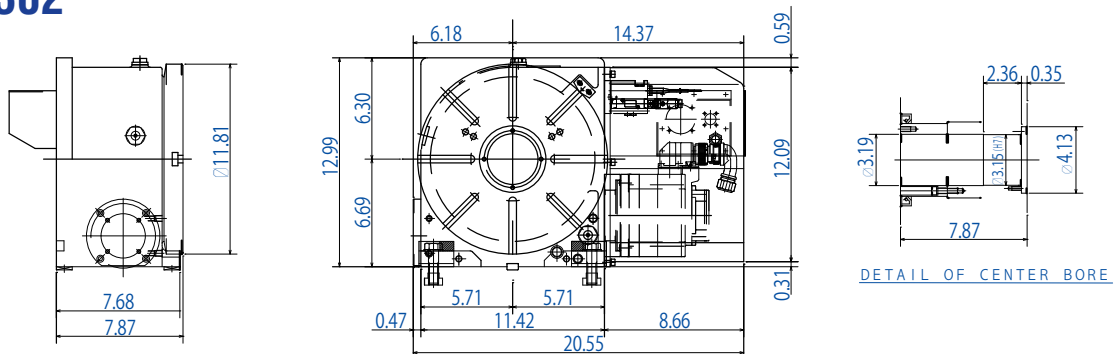
## CNC202



## CNC260



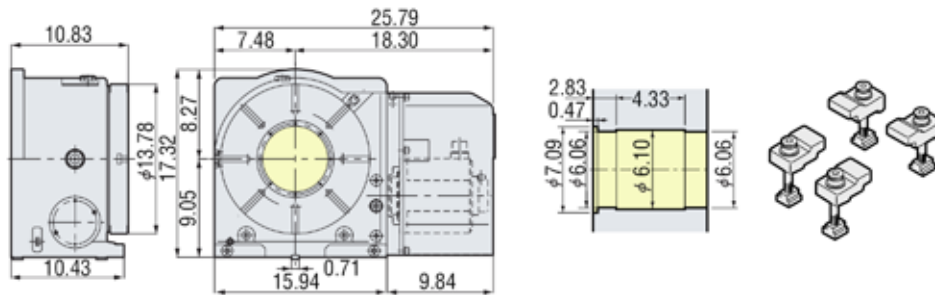
## CNC302



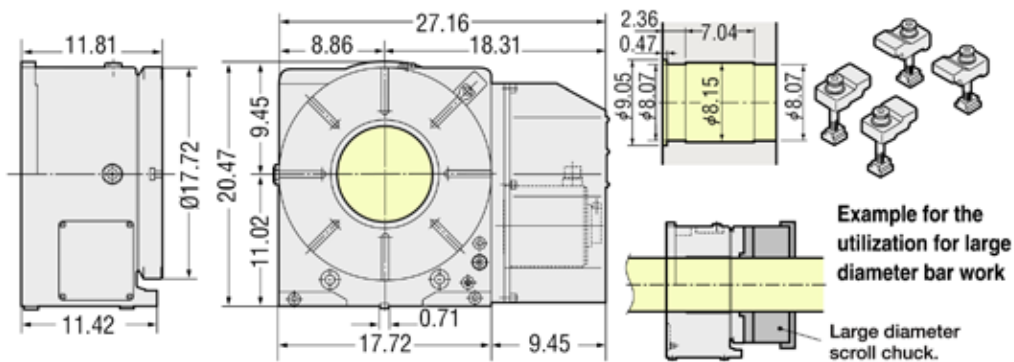
Please contact Lyndex-Nikken to confirm Hwacheon / Nikken Rotary Table working envelope. Drawings are subject to change.

# Rotary Table Dimensions

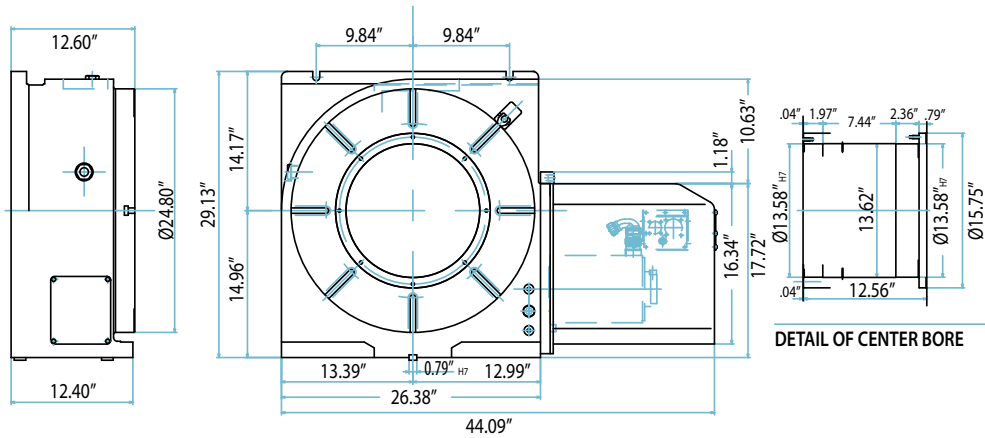
## CNCB350



## CNCB450

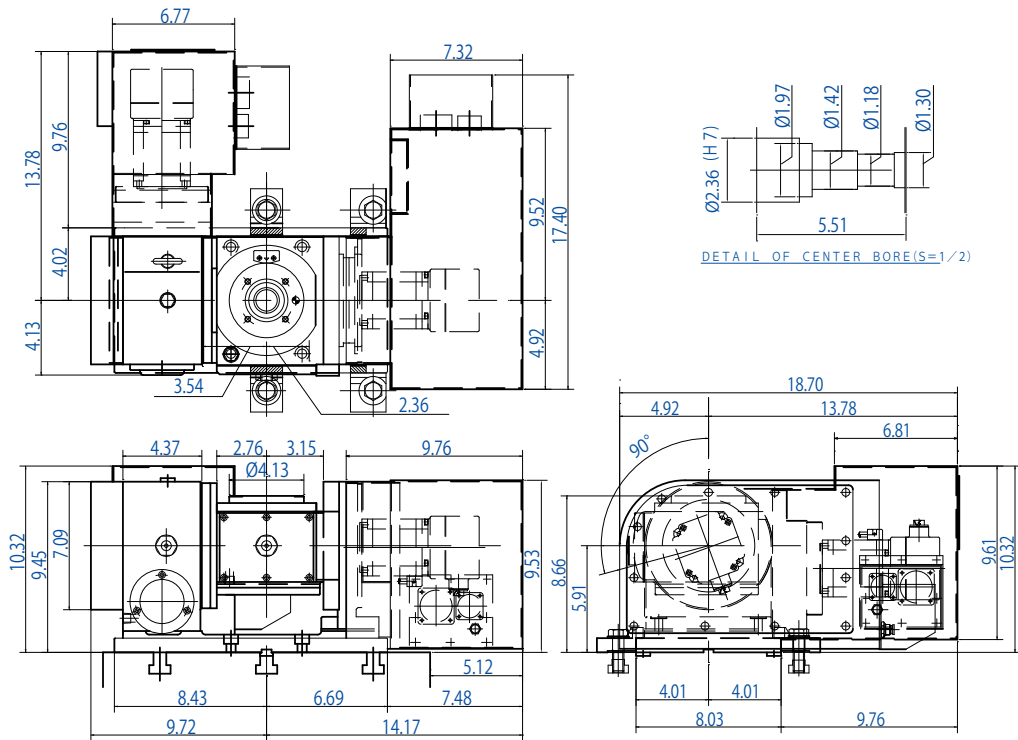


## CNCB630

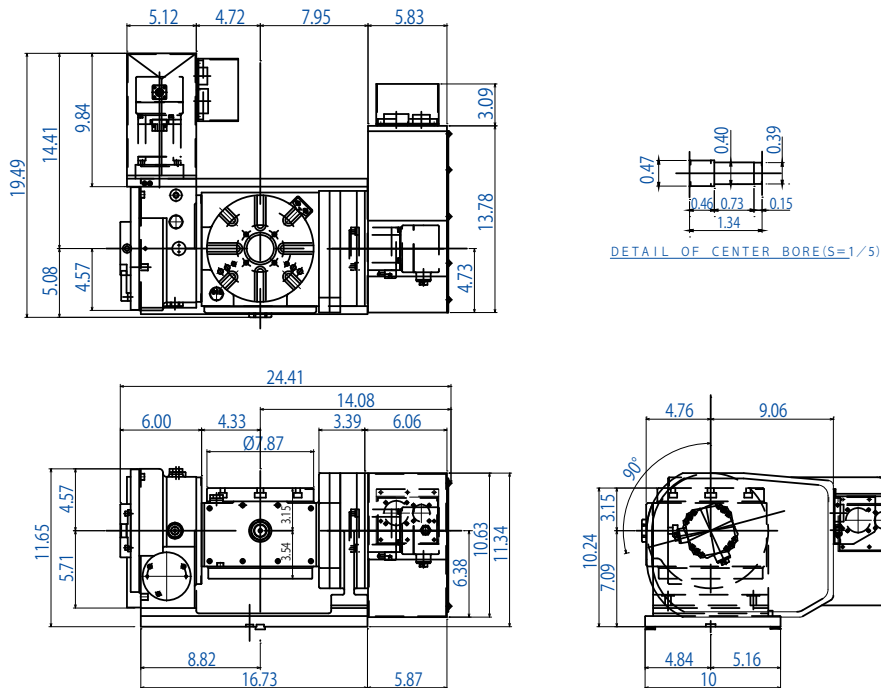


Please contact Lyndex-Nikken to confirm Hwacheon / Nikken Rotary Table working envelope. Drawings are subject to change.

## 5AX-130



## 5AX-201

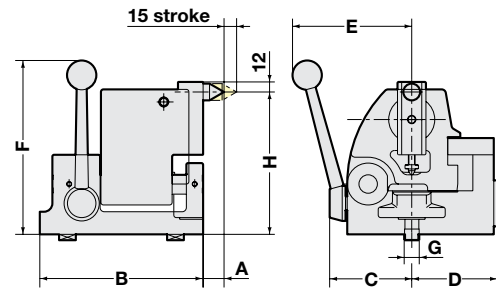


Please contact Lyndex-Nikken to confirm Hwacheon / Nikken Rotary Table working envelope. Drawings are subject to change.

# Tailstock & Support Tables Accessories



Model	Hand Op. Tailstock	Manual Tailstock	AIR/HYD. Tailstock	Hyd. Tailstock	Support Table	Scroll Chuck
CNC180 CNC202	MT-135	P-125S	PBA-135	-	TAT170	180 = R-6 202 = R-7
CNC260 CNC302	MT-170	P-170S	PBA-170	H-170S	TAT250	R-9
CNC321 CNC401	MT-230	P-230S	-	H-230S	TAT320 TAT400	R-12
5AX-130	-	P-150S	PBA-150	H-150S	-	R-4
5AX-201	-	P-170S	PBA-180	H-170S	-	R-7
5AX-350	-	P-310S	-	-	-	-



Manual Tailstock

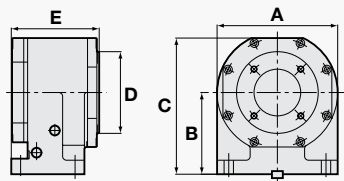
Code No.	Center Height H	A	B	C	D	E	F	G	Weight (kg)
P-125S	125~135	27	150	76	74	120	210	14	11.5
P-150S	145~160	25	195	98	102	145	210	18	22
P-170S	160~180	25	195	98	102	145	210	18	22.5
P-210S	200~220	25	195	98	102	145	250	18	26.5
P-230S	220~240	25	195	98	102	145	250	18	27
P-280S	280~300	15	235	103	124	145	330	20	41
P-310S	300~310	15	235	103	124	145	330	20	41.5

## Support Tables

### Small Size Support Table TAT (JAPAN. PAT)

Code No.	A	B	C	D	E	Clamping system	Brake Torque (N·m)	Weight (kg)
TAT170	155	135	220	170	138	Air	205	25

#### TAT170

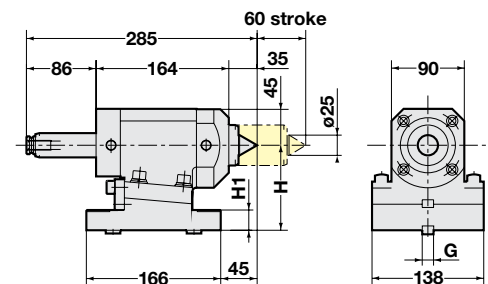
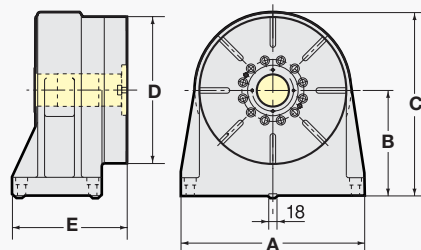


### Support Table TAT

Code No.	A	B	C	D	E	Clamping system	Brake Torque (N·m)	Weight (kg)
TAT250	250	170	295	250	145	AIR/HYD.	112 / 784	50
TAT320	400	230	390	320	250	HYD.	1470	120
TAT400	400	230	430	400	250	HYD.	1470	140
TAT500	480	310	560	500	250	HYD.	1470	200

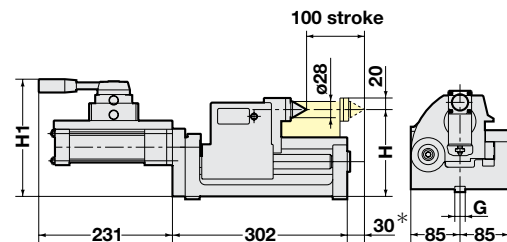
#### TAT250

#### TAT450



AIR/HYD. Tailstock

Code No.	Center Height H	H <sub>1</sub>	G	Thrust (N)		Weight (kg)
				Air 0.5 MPa	Hyd. 2MPa	
PBA-135	135	55	14	1176	4733	20
PBA-150	150	70	18	1176	4733	22
PBA-170	170	90	18	1176	4733	24.5
PBA-180	180	100	18	1176	4733	25.5



Hydraulic Tailstock

Code No.	Center Height H	H <sub>1</sub>	G	Thrust (N)	Weight (kg)
				Hyd. 3.5MPa	
H-150S	145~160	191	18	5370	28
H-170S	160~180	211	18	5370	35
H-210S	200~220	251	18	5370	41
H-230S	220~240	271	18	5370	45





## Complete Turnkey Installation and Interface

Lyndex-Nikken is the only rotary table manufacturer to offer complete interface and installation on Fanuc controller machining centers. You can rely on us to provide a clean and professional installation which will look as if it came directly from the factory.

We guarantee a seamless integration with your machine tool and CNC control, whether a 4th or 5th axis, on vertical or horizontal machining centers.

## A team of experts dedicated to provide 100% customer satisfaction

Before purchasing a rotary table, it's important to go through preliminary steps which will insure that you choose the right table to fit your machine and meet your manufacturing expectations. Lyndex-Nikken regional managers will guide you thru these different steps and assist you with table selection, brake system selection and machine fit, guaranteeing complete customer satisfaction.

## The highest quality hardware and components

We only use superior hardware and components to guarantee the best results and trouble-free, long term reliability for our products.

- Genuine Fanuc parts
- Genuine Fanuc option parameters
- Cut and wear resistant Waterproof Cabling
- Cable management

## Factory Clean Installation

Our service includes the following:

- Drive Installation
- Parameter Changes
- Communication Cables
- Table Installation
- Fiber Optic Cables
- Documentation
- Bulkhead Cable Set
- External Cable Installation



## Step 1 - Electrical Cable Setup

1. Mount cable kit and air line plate on to sheet metal.
2. Plumb the electrical cables to the electrical cabinet.



## Step 2 - Amplifier

1. Mount Fanuc amplifier and fiber optic cables.
2. Set parameters to turn on additional axes.



## Step 3 - Rotary Table Setup

1. Install rotary table for fine tuning.
2. Install brake clamp and unclamp buttons on control panel.
3. Setup and programming training.



## Milling Chuck Features

### THE MOST RELIABLE AND POWERFUL TOOLHOLDER

**The Original:** US Patent (7018919) - Nikken Japan is the inventor of the Milling Chuck

**Stable Heavy Milling:** High strength Nickel Chromium Molybdenum 4340 alloy. Solid 1-piece base and thick wall design ensure no distortion during heavy machining.

**High Runout Accuracy:** Within 0.0002" at 4" from the nose guaranteed

**Even Gripping:** Clamping along the entire shank is a key condition for precise milling. Only Nikken Taper Plus Milling Chucks clamp even at 3mm from the nose. This is ideal for roughing and finishing.



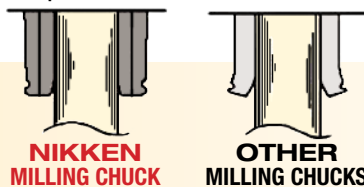
Forged Nickel Chrome Molybdenum 4340 ground on taper and base.



Thick nut exerts immense gripping strength by collapsing tight taper on the mill chuck body.



Staggered, coated steel cage packs 140% more needle rollers than imitations. This provides more gripping power. The retainer is NOT made of phosphor bronze but rather of special steel which will never break.



NIKKEN MILLING CHUCK

OTHER MILLING CHUCKS

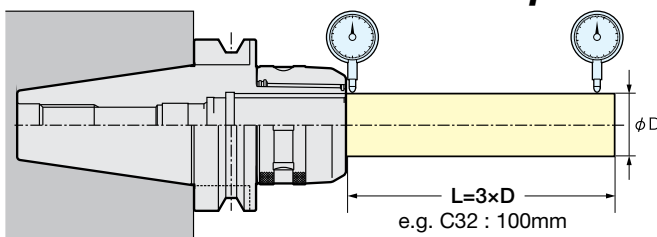


### High Runout Accuracy:

Within 0.0002" at 4" from the nose

**guaranteed!** Flange and taper grinding allow for smooth and precise chucking of tool, resulting in minimal TIR.

Within 5  $\mu$ m



### Sub-Zero Treatment (-90°C)

All milling chucks are cryogenically treated after heat treatment to remove residual Austenite. This creates a uniform Martensite state and eliminates warpage and distortion, preventing deformation during the life of the toolholder.



## SK Collet Chuck Features

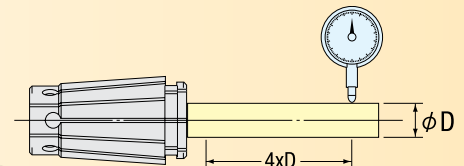
### LEAN, TOUGH AND EFFICIENT

- Lean:** Narrow body design accesses tight spots
- Versatile:** Applicable for all milling, drilling, reaming and rigid tapping applications
- Flexible:** Covers sizes from .027" to 1"
- Accurate:** Two times more accurate than ER Collet Chucks, within 10 times better repeatability
- Extremely Precise:** 0.00012" or less concentricity guarantee with on-size collets all the time
- Extremely Successful:** Over 1 million SK Collet Chucks and 15 million SK collets sold worldwide



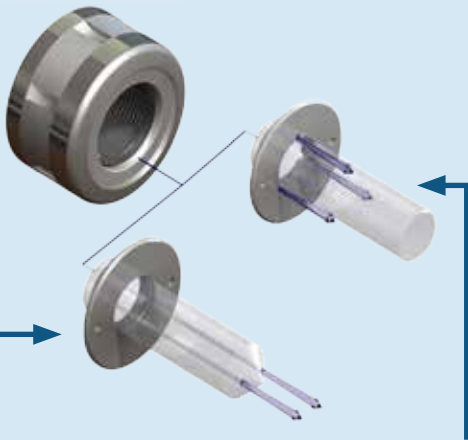
### High Runout Accuracy:

Nikken guarantees a 3 micron runout tolerance for their "on size" fractional and metric size precision collets due to Nikken's special heat treatment, grinding and custom slotting process.



**HIGH PRESSURE  
COOLANT  
CAPABLE**

### Superior SK Coolant System



**Coolant-thru Disc:**  
A perfect seal is formed around cutting tool shank when paired with Coolant Nut

**Slotted Disc:**  
When paired with the Coolant Nut, coolant is directed to the cutting edge of the cutting tool, making this combination ideal for non-coolant-thru tools.



### INCREASED GRIPPING POWER:

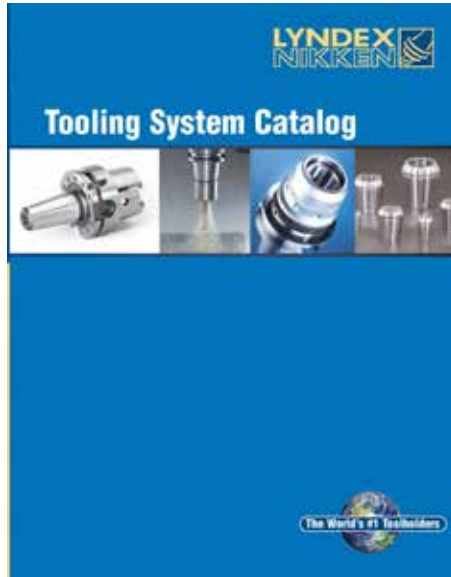
Our steep 8° collet seats deeper in the body of the holder, providing 2x more gripping power than traditional 16° ER collets.

### SK Collet Range:

<b>SK6</b> (0.7-6.0mm - 0.027-0.236")	<b>SK10</b> (1.75-10.0mm - 0.069-0.393")	<b>SK16</b> (2.75-16.0mm - 0.108-0.629")	<b>SK25</b> (16.0-25.4mm - 0.629-1.000")

Contact us for more information on our products lines.

## Tooling System Catalog



CAT2011-TC

## Taper Plus Catalog



CAT2014-TAPERPLUS





**Lyndex-Nikken website:**

Be sure to check out  
our customer-friendly website

***[www.lyndexnikken.com](http://www.lyndexnikken.com)***

to find out more about our products,  
services and all we have to offer!

This site provides a complete  
overview of our product line, and  
features technical data, videos,  
CAD drawings, catalogs and more.



**[www.lyndexnikken.com](http://www.lyndexnikken.com)**

**1468 Armour Boulevard**

**Mundelein, IL 60060**

**E-mail: [info@lyndexnikken.com](mailto:info@lyndexnikken.com)**

**Phone: (847) 367-4800**

**Fax: (847) 367-4815**

**CAT2015-HWACHEON-RT**

**MAR. 2015**